

BCHC
BACKCOUNTRY HORSEMEN
OF CALIFORNIA
13061 Rosedale Hwy
Suite G, Box 21
Bakersfield, CA 93314
ADDRESS SERVICE
REQUESTED

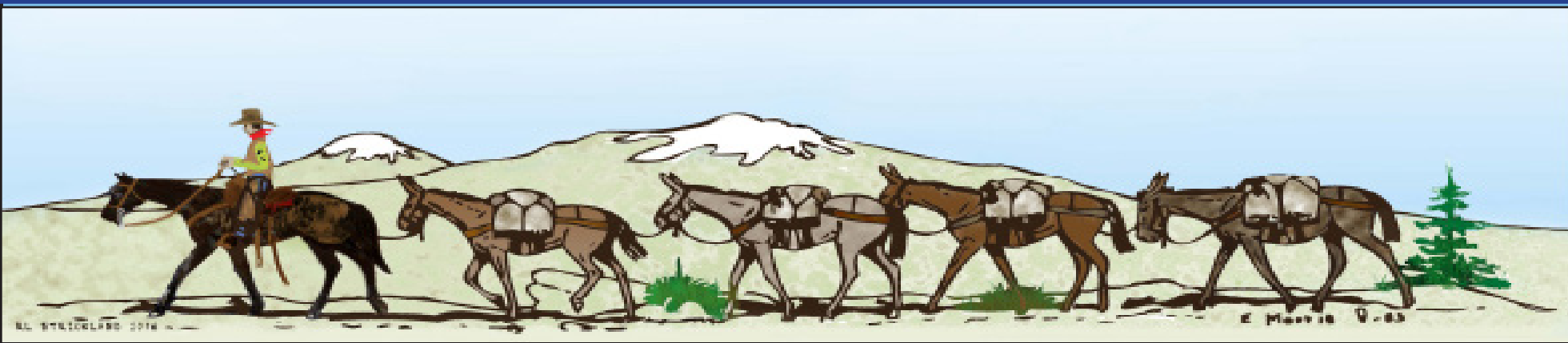
FIRST-CLASS MAIL
PRESORTED
U.S. POSTAGE PAID
SACRAMENTO, CA
PERMIT #328360

The Backcountry News

Volume 37, Issue 1

Official Publication of Backcountry Horsemen of California

WINTER 2025



LET'S RENDEZVOUS IN CORNING !

By Michele Machado Woods
Top of the State Unit President and Newsletter Editor

It's 2025 and the north state BCHC Units are excited to be planning and hosting this year's Rendezvous at the Rolling Hills Casino Equestrian Center in Corning! This event, April 11-13, is the one major education and fundraising event put on by BCHC each year that benefits our membership, partner agencies, and the general public. Admission to Rendezvous and all education is FREE and open to the public.

We chose "Ode to Our Favorite Trails" as the theme for 2025 Rendezvous to celebrate, in words and stories, our favorite places to ride, hike, camp and recreate. Tying into this theme is the Friday dinner entertainment of Cowboy Poets of all ages. You won't want to miss hearing their entertaining and often humorous tales and poems!

Also, to celebrate great work done on our favorite trails, we're encouraging ALL trail users and advocates to attend Rendezvous. Northern California features several very active trail work non-profits and BCHC units have forged some valuable partnerships with these organizations to get some great work done in recent years. We're inviting the Bigfoot Trail Alliance, Ascent Wilderness Experience, and other area trail work non-profits to 2025 Rendezvous to help lead some of the trail work education classes and to "network" with BCHC members and the public to get more great work done in 2025 and years to come.

This year we have scheduled an outstanding line-up of educators on equine health and safety on trails, the principles of "Leave No Trace," public interaction, saw work and safety, horsemanship, and youth education. Our diverse list of educators includes Robert Eversole (a.k.a. TrailMeister), accomplished horse trainer Bryan Neubert, personnel from the U.S. Forest Service, local veterinarians, and subject matter experts from BCHC. Marine Corps personnel from the Mountain Warfare Training Center in Bridgeport, California, are scheduled to conduct packing demos for adults and children as a part BCHC's Packing Education.

Robert Eversole, the TrailMeister, spends months of each year traveling all over the U.S. and internationally, leading trail riding and horse camping clinics. Robert's appearance at 2025 Rendezvous is his ONLY California event scheduled so far this year, so don't miss meeting and learning from him! TrailMeister, author of "The ABCs of Trail Riding and Horse Camping," helps build the confidence of clinic attendees with a mix of candid humor and straight talk, as well as actionable steps to back up any lofty ideas he may share. TrailMeister will be hosting a paid mohair cinch-making clinic and four FREE seminars at 2025 Rendezvous. The four free seminars will feature education about horse camping, lightweight horse camping in the Wilderness,

See **RENDEZVOUS**, continued on Page 11

The Backcountry News

An internal publication of the Backcountry Horsemen of California, Inc.

Editor Carol Jo Hargreaves

BCHC_Newsletter@bchcalifornia.org

BCHC Official Website: www.bchcalifornia.org

Printed by The Manteca Bulletin

Publication Information: The Backcountry News is the official journal of the Backcountry Horsemen of California, Inc., published four times per year. All rights reserved. It is an independent publication with news and information of interest to Backcountry Horsemen members, with an average circulation of approximately 2,000 per issue. Annual digital and print subscriptions are \$15 for non-members. One free digital issue may be provided, upon request. Nonprofit postage paid at Manteca, CA.

Who is BCHC? The Backcountry Horsemen of California, Inc. is a 501(c)3 nonprofit organization incorporated in the State of California, March 13, 1990, with a 501(c)4 education foundation established in 2007. The Backcountry Horsemen of California, Inc., reserves the right to refuse any articles and/or advertisements that are not consistent with the Backcountry Horsemen of California's Objectives and Purpose statement. Other material will be printed at the Editor's discretion.

Disclaimer: Articles and advertisements that appear in The Backcountry News do not necessarily reflect the position or opinion of BCHC or its officers and members. Nor does publication of said articles and advertisements constitute endorsement of the views or of the goods or services offered therein that they may express. Accuracy of all material is the sole responsibility of the authors. BCHC is not responsible for unsolicited material of any kind.

Reader Submission: The Backcountry News welcomes reader contributions, event and calendar dates, and unit news. These will be printed on a space-available basis. Submissions should be sent in a Microsoft Word format to include author and photo credits. Longer articles are subject to edit for space at the discretion of the Editor. Photos may not be returned.

Deadlines: Advertising, announcements, pictures and other copy must be received at The Backcountry News by the deadlines listed below.

<u>Edition</u>	<u>Deadline</u>
SPRING 2025 EDITION	APRIL 22, 2025
Summer 2025 Edition	July 15, 2025
Fall 2025 Edition	October 15, 2025
Winter 2026 Edition	January 15, 2026

Advertising Rates per Issue: Rates effective January 2012. All ads must be paid in advance.

Number of Issues:	1	2	3	4	Cost per Issue
Full Page	\$150.00	\$142.50	\$135.00	\$127.50	
Half Page (h/v)	\$100.00	\$95.00	\$90.00	\$85.00	
Quarter Page (h/v)	\$80.00	\$76.00	\$72.00	\$68.00	
Bus. Card (h/v)	\$25.00	\$23.75	\$22.50	\$21.25	

Advertising: All ads must include all fonts and images used in artwork. Ads must be at a resolution of 300 pixels per inch at the actual size used in the artwork. Mail payment to the BCHC Treasurer. Checks returned from the bank will have a \$25 return check fee. No advertising will be accepted from advertisers with outstanding balances. Liability by The Backcountry News shall not exceed the space occupied by the error. Never shall The Backcountry News be liable for any general, special or consequential damages. All claims for adjustments must be made within 30 days of the first publication of said ad.

2025 EXECUTIVE COMMITTEE

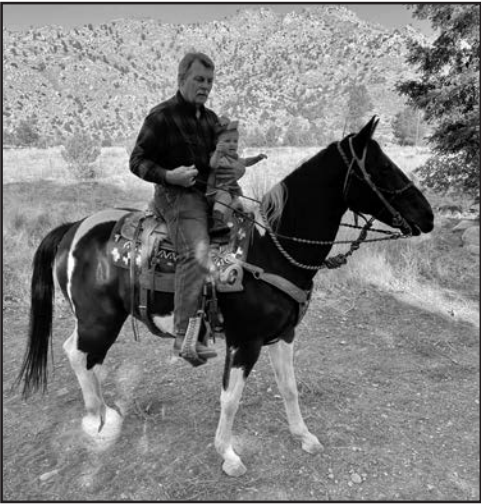
Mike Hughes, President · (760) 223-0608 · BCHC_President@bchcalifornia.org
Jamie Wilson, 1st VP (Insurance) · (559) 202-7216 · BCHC_VP1@bchcalifornia.org
Cindy McMurry, 2nd VP (Volunteer Service Hours Reporting) · (530) 640-0429 ·
BCHC_VP2@bchcalifornia.org
Annette Pounds, Secretary · (76382-9893 · BCHC_Secretary@bchcalifornia.org
Lynn Joiner, Treasurer, Chaplain · (661) 747-6347 ·
BCHC_Treasurer@bchcalifornia.org
Ruthie Heuer, Co-VP of Education · (559) 560-6161 ·
BCHC_Education1@bchcalifornia.org
Denise Robinson, Co-VP of Education · (559) 877-3532 ·
BCHC_Education2@bchcalifornia.org
Chip Herzig, VP of Membership · (775) 463-3634 ·
BCHC_Membership@bchcalifornia.org
Troy Patton, VP of Public Lands · (760) 764-2850 ·
BCHC_PublicLands1@bchcalifornia.org
Tammy Bozarth, Co-VP of Youth Education and COR ·
(661) 322-2545 · BCHC_YouthEd1@bchcalifornia.org OR
BCHC_COR@bchcalifornia.org
Gail Inman · Co-VP of Youth Education · (559) 359-6027 ·
BCHC_YouthEd2@bchcalifornia.org
Michael King, Immediate Past President · (209) 606-8323 ·
BCHC_PastPres@bchcalifornia.org
Randy Hackbarth, BCHA Nat'l Director · (530) 626-0571 ·
BCHC_NatDir1@bchcalifornia.org
Larry Shuman, BCHA Nat'l Director · (530) 526-0590 ·
BCHC_NatDir2@bchcalifornia.org
Terry Jorgensen, BCHA Alt. Nat'l Director · (760) 789-5185 ·
BCHC_AltNatDir@bchcalifornia.org

2025 COORDINATORS

Accounting - Hardaway, Axume, Weir, CPAs
State Board Meetings - Annette Pounds · (760) 382-9893 ·
BCHC_Secretary@bchcalifornia.org
Membership Communication Coordinator - Chip Herzig ·
(775) 463-3634 · BCHC_Coordinator@bchcalifornia.org
Newsletter Editor - Carol Jo Hargreaves · (209) 988-5831 ·
BCHC_Newsletter@bchcalifornia.org
2025 Rendezvous Gen'l Chair - Larry Shuman - (530) 526-0590 ·
BCHC_Rendezvous@bchcalifornia.org
Rendezvous Secretary - Susie Patton - (760) 764-2850 ·
BCHC_RendSec@bchcalifornia.org
Saw Program Manager - Dan Chartier · (530) 356-0256 ·
BCHC_SawCoord@bchcalifornia.org
Sergeant at Arms - Lloyd Erlandson · (209) 761-3942 ·
BCHC_SgtAtArms@bchcalifornia.org
Temporary Webmaster - Carol Jo Hargreaves · (209) 988-5831 ·
BCHC_Webmaster@bchcalifornia.org

For more BCHC information, see our website: bchcalifornia.org

PRESIDENT'S PAGE



**BCHC President
Mike Hughes**

RIDE THEM WHILE YOU HAVE THEM

Over the last few years, I have observed and experienced many of my fellow equine riders' herds aging out and diminishing in size. As the animals and people get older the stock are utilized less and less. The days of frequent phone calls setting up work parties and camp outs appear to be less frequent.

In addition to this issue, there are outside forces obstructing BCHC's ability to maintain a presence on public lands. Recently POTUS Joe Biden took under advisement and

consideration an executive order placing the Sierra National Forest within what would become a newly established Sierra National Monument. This would establish a permitted, restrictive land bridge along the spine of the Sierra Nevada range from the northern border of Yosemite National Park in the north to the southernmost border of the Sequoia and Kings Canyon National Park complex in the south, virtually encompassing the backbone of California. This area would be administered under some of the most complex and restrictive public lands use requirements in the National Forest System. Do not misunderstand where my heart is on this subject. I love riding the wilderness and that it allows the human psyche to relish the outdoors and refresh the soul while assisting in conserving public lands. On horseback or mule, we do this without the destructiveness of mechanical contrivances. However, what was proposed in this executive order was a broad loss of access to public lands and the right to use livestock on public lands, which has been codified into the history and fabric of this great nation over the past 250 years.

It is undeniable that horse and stock ownership is aging out within the boundaries of the United States. Attend any gathering of equine interested participants and the two most prominent features will be gray hair (or, in some cases, no hair) and wisdom acquired over the years. This wisdom brings with it the reminder of BCHC's mission statement and responsibility to the land. Therefore, a collaboration was formed to address the concern. A letter was drafted by the High Sierra Unit Public Lands Committee, consisting of Dick Cochran and Bob Herrick, in conjunction with state BCHC Vice President of Public Lands Troy Patton and signed by state BCHC President Mike Hughes, clearly stating BCHCs opposition to the creation of this new monument.

This letter was carried to the White House by Congressman David Valadao (R-CA, 22nd District) who supported BCHC's efforts. As the gatekeepers of stock users' interests in utilizing and preserving natural resources, it was incumbent upon BCHC to make our objections known. Hopefully, our voice, when joined with others, will be sufficient to sway opinion toward common sense. We thank all who helped us with this impactful endeavor.

Now, on to other significant matters facing us as equine operators. I make

it a point to put hands on the animals whenever I am around the stock. Whether it be a hug, running my hands across their bodies or just knocking off mud and debris, I endeavor to check out their health and wellbeing. While observing their condition, I simultaneously try to be observant of their physical surroundings. Is there a loose board, nail or wire, anything that can be a puncture or trip hazard? These are the concerns I have foremost in my mind.

While in this 2025 "new year" frame of mind, I recently read an article published by The Carolina Equine Hospital. Following is a list of their six recommendations for the new year. This condensed version of the article has been edited for brevity and used by permission of the Carolina Equine Hospital, Browns Summit, North Carolina, 27214 (thank you, Ashley). The full article can be located on their website: carolinaequinehospital.com

1. More Time in the Saddle

Though this is easier said than done, it will make the animal stronger and healthier. Keep an eye on the forecast and plan your ride accordingly. Remember if it is cold take the necessary steps afterward to keep your mount safe and feeling good.

2. A Safer Stable

Don't put things off. Fix that nail sticking out. Take care of barn safety issues when you first notice them.

3. Better Horse/Human Health

Your main goal should be for you and your horse to stay healthy. Keep your fitness up so you can ride longer and keep your horse's endurance and strength up; this is a partnership.

4. More Quality Time

Riding is great, but do you ever just hang out with your horse simply enjoying each other's company? Spending time with horses (and mules) is magical.

5. Work On Your Emergency Fund

Horses are expensive. Emergencies happen out of the blue. Creating an emergency fund is a very responsible decision.

6. Clean Out Your Vehicle/Trailer

Keeping your vehicle clean and tidy can help you out big time if there is an equine emergency. Especially when trying to find the halters when in immediate need.

With mid-winter in full swing, I hope you find some of these tips useful.

I look forward to seeing many of you at the State Board Meeting in Bakersfield, February 7 and 8. For everyone else, I look forward to seeing you at the BCHC Rendezvous in Corning, April 11 through 13.

Until then, ride them while you have them!

Mike Hughes
President
Backcountry Horsemen of California

BCHC NEWS



BCHC Editor
Carol Jo Hargreaves

HAPPY 2025!

If your New Year's resolutions include something about personal growth and health, you, like me, have promised to improve your life balance and be more intentional in what you do. You might have a new exercise regime, be decluttering your house, be eating more vegetables and fruits, be keeping up your social network, or pursuing things that inspire you.

Did you know you can accomplish all of this through Backcountry Horsemen? (Well, maybe not decluttering your house!) You can participate in rides and volunteer service projects for exercise; learn dutch oven cooking or attend a nearby dutch oven event to sample the foods; get to know the organization better by actively taking part (maybe even attend the February State Board meeting in Bakersfield?). Learn more about what Backcountry Horsemen of California is and does by reading this newsletter and checking out the BCHC website and maybe you will become inspired to take on a leadership role in your unit or at the state level. People with ideas, energy and enthusiasm are welcome!

Several new leaders are assuming their jobs at the state level this month. Annette Pounds of Kern River Valley Unit stepped up to accept the Secretary position (thank you, Annette!) Dan Chartier from Shasta Trinity is now managing BCHC's Saw Program, and Lucy Badenhoop of Mother Lode Unit is chairing the Intern Committee as well as helping BCHC secure grant funding to support our Intern Program.

The three northern California units are working hard to put on a unique Rendezvous for us at Rolling Hills Equestrian Center. Located at the casino in Corning (the town famous for its award-winning olive products), facilities include everything needed for classes, competitions, meals and vendors - stalls, several indoor and outdoor arenas, RV spaces with hook-ups, even a dump station. You might notice that things are run differently than at past venues but this being BCHC's annual fundraiser, it's definitely worth attending and joining in on the fun!

Only a couple more months and it will be time for rides, trail work, pack clinics and outdoor public events. Remember to let me know, *in advance*, if you would like extra copies of the paper printed to distribute at your events/activities. I need to know the number of papers you would like and the mailing address of the person to whom they should be sent.

Thanks for reading The Backcountry News! Past editions are posted on the BCHC website. Here's the QR Code. Go to the "BCHC Newsletter" page.



BCHC Secretary
Annette Pounds

BCHC WELCOMES ANNETTE POUNDS AS SECRETARY

After months of searching for someone to fill the BCHC Secretary position, Annette Pounds of Kern River Valley Unit stepped up, willing and eager to do the job. She will officially begin her new duties at the February State Board Meeting.

Susie Patton, dedicated, knowledgeable and hardworking BCHC Secretary for the past 12 years, served the organization during the tenure of four BCHC Presidents (Waller, Erlandson, King and Hughes). Susie was recently appointed to the new Rendezvous Secretary position but still graciously offered to assist Annette with any questions or issues that arise.

Raised on a small ranchette outside of Oakdale, California, Annette Pounds graduated from Beyer High School in 1978, then attended Modesto Junior College and Solano Community College in Fairfield where she studied business and took courses in chemical and environmental hazards.

Annette began working in retail management for the Gap, Inc., American clothing and accessories retailer, in the San Francisco and Sacramento areas. When her son was born in 1986, she changed careers from retail management to mortgage lending.

Since 1996, Annette has been a Licensed Mortgage Professional, opening a Real Estate Division in the Kern River Valley area in 2015. She became acquainted with Kern River Valley Unit members Larry and Chris Cigainero at church and joined their unit in 2017. Annette loves her current job and location and has no plans to retire.

Thank you, Annette, for your willingness to take on the duties and responsibilities of the BCHC Secretary position! Even with recent shifts of Bylaws and Rendezvous tasks to others, this remains an enormous and vitally important job!

FEBRUARY STATE BOARD MEETING

Rancho Rio Equestrian Center

5320 Peacock Park Lane, Bakersfield, CA

Friday, Feb. 7 - Executive Committee Dinner at 6 p.m.
Meeting to follow.

Saturday, Feb. 8 - All Unit Public Lands and Education
Chairs invited to attend 9 a.m. meetings.
State Board meeting at conclusion of Ed/PL meetings.

VOLUNTEER SERVICE



**BCHC 2nd Vice President
(Volunteer Service)
Cindy McMurry**

VOLUNTEER SERVICE HOURS REPORTS DUE BY FEBRUARY 1

It's that time of year! Your unit's Volunteer Service Hours Reports are due to me by February 1, 2025. If you need help with any aspect of this project, let me know!

I have heard from two units that they were having trouble opening the form from the BCHC website. I'm not sure what the problem is but I downloaded the form and sent it to them and it opened and performed correctly, so if you run into this issue, I can help you out.

So far, I have reports from Mother Lode and Santa Ana River units. Thank you for being so prompt! High Country's are being worked on and I have had communication with Redshank and Redwood units. I know many of us are very busy

with personal and volunteer commitments but we need this data completed and sent on to BCHA so our voice can be heard at the 2025 National Board Meeting.

I was asked what data should be recorded for a fundraiser trail ride weekend since it is for fun. Log all your prep and clean-up time, grocery shopping, marking trails or other prep for the event as "Basic Labor" unless it is something that requires special knowledge or skill such as operating equipment or servicing vehicles, cooking for a crowd or building structures, etc. Log all time spent advertising and registering participants or any other administrative work under "Administrative" time. ANY time spent educating participants about our mission is logged under "Education" and log the miles you spend on the trail under "Non Wilderness Miles." Remember to record any money or the value of anything you donate in that last column, "Donations." If you have any other questions, give me a call or email and I will be happy to help.

Cindy McMurry
BCHC 2nd VP (Volunteer Service)
mcmurrcindy@gmail.com
(530) 640-0429

VOLUNTEER SERVICE HOURS REPORTS ARE DUE BY FEBRUARY 1

BCHA: Dedicated to keeping trails open for everyone



Submitted by Randy Hackbarth, BCHA National Director

BCHA 2025 NATIONAL BOARD MEETING

Prescott, Arizona Hotel & Conference Center
1500 AZ-69
Prescott, AZ 86301

April 13 to 16, 2025
Register at: <https://form.jotform.com/242948287791171>

Hotel Reservations
Call the hotel reservations department at 1 (800) 967-4637 and mention "Back Country Horsemen of America" to receive the discounted group rate.

Agenda to be published in March 2025

- Refund Policy:**
- ☐ Full refund up to 30 days prior to meeting
 - ☐ 50% refund 15-29 days prior to the meeting
 - ☐ No refund if 14 days or less to the National Board Meeting

About the National Board Meeting:
Email michellewade@bcha.org with questions



THANK YOU, 2024 RENDEZVOUS SPONSORS!

BCHC sincerely thanks the following 2024 Rendezvous sponsors for their generous support.
Please visit and support these businesses when you have the opportunity.

\$1,500 Sponsors

We Have Solutions.

- Property
- Liability
- Autos
- Workers Compensation
- Benefits
- EPLI

Crop
Home
Cyber
Equipment

WIS&G
Winton-Ireland, Strom & Green
Insurance Agency

Contact us today to review your coverage.
WISG.COM | 800.790.4875 | INFO@WISG.COM | LIC. #0596517

Winton-Ireland, Strom & Green is an equal opportunity provider.

Helping our Members Prosper

LOCAL AGRICULTURE FINANCING

TURLOCK BRANCH
209-668-3522

YOSEMITE FARM CREDIT
Proud supporter of Backcountry Horsemen of California
yosemitefarmcredit.com

DAIRY LOANS • ORCHARD DEVELOPMENT • LAND PURCHASES • CROP LOANS • EQUIPMENT LOANS

\$1,000 Sponsors

GARTON TRACTOR INC.
Since 1954

Follow us!

GartonTractor.com
1-877-TRACTOR
Quality People Quality Products®

SWEET RIVER EQUINE CLINIC, INC.

200 Weyer Road
Modesto, CA 95357

Daniel L. Sweet, DVM
Annie O King, DVM
Carol Van Hoogmoed, DVM

Resting Heart Rate
28-44 beats per minute

Resting Respiratory Rate
12-24 breaths per minute

Normal Rectal Temperature
99.5-101.5 degrees F

ADULT HORSE TPR:

www.SweetRiverEquineClinic.com

\$1,000 Sponsors

CHICKEN RANCH CASINO®

\$250 Sponsor

D₂Trailer Sales.com

Kellie Benton
Galt, CA
kellie@d2trailersales.com 209-745-5480

EXISS MAILER MARK INNOVATIVE HANCOCK Bison

\$100 Sponsors

FOREST SERVICE U.S. DEPARTMENT OF AGRICULTURE

PACK STOCK CENTER OF EXCELLENCE
PACIFIC SOUTHWEST REGION

F&M BANK

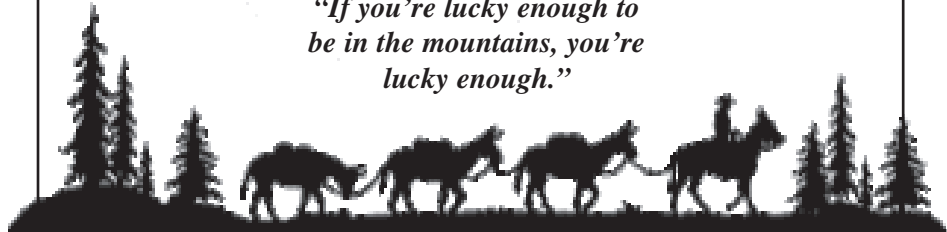
Ken R. Olds
Senior Vice President
Hilmar Market Manager

o 209-664-5438
c 209-251-3532
f 209-632-0200
kolds@fmbonline.com

19925 W. First Street
P.O. Box 759
Hilmar, CA 95324

Thank you for \$1,000 sponsorship from Terri Arington in memory of her late husband, Ron Arington. Ron was a longtime Ag teacher at Sonora High School. He was passionate about the back country, his horses and mules, his students and his wife.

*"If you're lucky enough to
be in the mountains, you're
lucky enough."*



INSURANCE



BCHC 1st Vice President
(Insurance)
Jamie Wilson, DVM

Greetings, Backcountry Horsemen!

I hope 2025 is off to a good start for all. Packing season is right around the corner!

In this article I will give a quick review of the insurance-related forms you need to have for most of your unit events. But first, I want to stress the importance of **unit membership**. (I know I said this is an insurance article, but I will get there.)

I was told about a BCH ride where a non-member attended the ride but didn't pay for membership. The person said they didn't know who to pay at the ride. This brings up two important points about events: (1) Verifying membership and (2) Signing liability forms. For this person to be able to go on the ride, they should have been through a check-in procedure, where someone in the unit checked to make sure the rider was a current member and signed BCHC's liability waiver.

Of course, this person could have snuck onto the trail behind the rest of the group, or maybe they were wearing Harry Potter's invisibility cloak, but a more likely scenario is that there was no organized check-in procedure. It would probably be pretty easy to spot a person walking around with a clipboard having people sign a form, or to hear a person make an announcement at the onset of the ride about signing a form.

THE BEST WAY TO ENSURE INSURANCE COVERAGE IS FOR ALL PARTICIPANTS TO SIGN BCHC'S LIABILITY FORM!

PLEASE make sure to designate someone in the unit to check in riders, packers, sawyers, even pooper scoopers at every event! Have a current list of members to check against. If a rider is not a member, they should fill out a BCHC Membership Application (have forms at the event) and pay their dues *before* the ride. EVERYONE, including current members, should sign BCHC's liability form (found on the BCHC website). Units must keep these signed forms for three years.

It's also worth noting that BCHC membership is declining statewide. What better way to build our numbers up than signing people up to be members at an event?

The **Liability Form** is on the BCHC website, along with the **Event Request Form**, which can be emailed to me to request an Additional Insured party or Proof of Insurance for an event. We also have an **Insurance Incident Report form**, to use if there is a *[grimace]* problem at an event such as an injury. If something does happen, it's important that we have contact information for all parties. It is also very useful

to have witness statements, space for which is included on the form. Please download the newest (2025) version of the form posted on the BCHC website.

If you have questions about forms or requests for insurance, please contact me by email at drjamie91@gmail.com or phone at (559) 202-7216.

Above all, let's stay safe AND have fun, but let's be covered!

Jamie Wilson
BCHC 1st VP (Insurance)

Forms referred to in this article may be found on the bchcalifornia.org website on the Documents & Forms page under "Insurance" or "Safety" headings.

OR copy and paste the URL into your browser to go directly to each form:

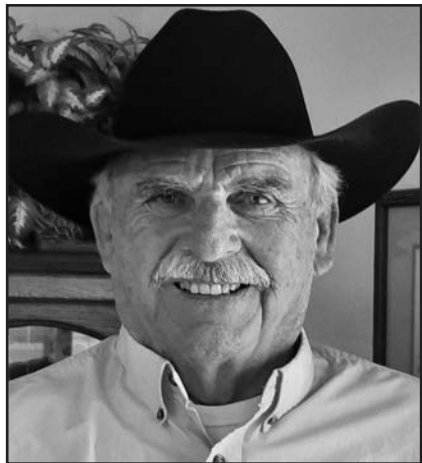
- Liability Form** - officially titled "Backcountry Horsemen of California Event Agreement And Release Waiver" - <https://www.bchcalifornia.org/public/documents/docsAndForms/BCHCInsuranceEventReleaseWaiver.pdf>
- Event Request Form** - officially titled "BCHC Insurance Request Form" - <https://www.bchcalifornia.org/public/documents/docsAndForms/BCHCPublicDaysRequestForm.pdf>
- Insurance Incident Report Form** - officially titled "BCHC [Insurance] Incident Form" Revised for 2025, this form is to be used for any accident/incident that occurs at a BCHC event/activity. [https://www.bchcalifornia.org/public/documents/docsAndForms/BCHC%20\[Insurance\]%20Incident%20Report_Jan%202025.pdf](https://www.bchcalifornia.org/public/documents/docsAndForms/BCHC%20[Insurance]%20Incident%20Report_Jan%202025.pdf)

NEW DEADLINE FOR SPRING 2025 EDITION

of the Backcountry News is: **APRIL 22, 2025**

Send submissions to:
BCHC Editor at
BCHC_Newsletter@bchcalifornia.org

PUBLIC LANDS



**BCHC VP of Public Lands
Troy Patton**

PUBLIC LAND HAPPENINGS IN CALIFORNIA

As you may have heard on the news, President Biden has been creating monuments as he leaves office. The one of concern to BCHC is the monument that would involve nearly all the Sierra National Forest.

The following letter, written by Richard Cochran and Bob Herrick of the High Sierra Unit and signed by BCHC President Michael Hughes, opposes the

“Range of Light National Monument.” The letter was hand carried to President Biden by the Office of Congressman David G. Valadao (CA-22) to ensure that it be received by appropriate staff within the White House.

Dear President Biden:

I am writing to you to express the opposition of the Backcountry Horsemen of California (BCHC) to the proposed national monument in the Sierra Nevada Mountains of Central California. Our understanding is that you may be requested by advocates of a change in the status of Sierra National Forest to make it a national monument operated by the National Park Service. Our organization is adamantly opposed to such a designation. BCHC has 21 units (chapters) located throughout California and is part of a national organization named the Back Country Horsemen of America (BCHA) which is established in 37 of our 50 states. BCHC members use Sierra National Forest for trips with horses and pack animals and for recreational horseback riding, all permitted by the multiple use concept used by the United States Forest Service to operate Sierra National Forest. Our activities are in keeping with the history of the opening of the West which was first explored by horsemen using pack animals to carry their gear. Multiple use will be eliminated if the area becomes a national monument.

If you would like more information about our position on this matter, please contact Richard Cochran, a member who can be reached at (559) 737-1606 or by email at richardcochran003@gmail.com.

Sincerely,

Mike Hughes, President BCHC

I attended a meeting in Clovis on this monument proposal in early January. I heard a panel discuss the proposal's pros and cons. The panel included staff of Senator Lee of Utah, Yosemite, wildlife advocates, California Off-Road Vehicle Association (host) and others. I spoke on behalf of BCHC during the question-and-answer session. The Antiquities Act states that monuments should only be as large as needed to offer said protection. (As an example, in Sequoia 27,000 acres was all that was needed to protect the giant sequoias, Clinton did 325,000 acres to stop logging). Biden is intending to take most of the Sierra Forest. The panel was all opposed to this Range of Light Monument. By the time you read this article, Biden may have already signed this.

Mother Lode Unit is against opening Sailor Bar to through vehicle traffic. A letter opposing the opening of Sailor Bar stated there are many reasons why traffic should not be allowed through Sailor Bar. One is a threatened species, Valley Elderberry Longhorn Beetle, that must not be disturbed. This species is protected by the Endangered Species Act of 1973. The additional traffic on both sides of this habitat would endanger the protected area. Creating through traffic roads would degrade the integrity of the park area, disturbing the additional species that live along the American River Parkway corridor. One of the goals of the original American River Parkway General Plan was to protect habitat while allowing gentle recreation in the parkway.

Randy Rasmussen, BCHA's Director for Public Lands & Recreation, received notice January 15, 2025, from the Lake Tahoe Basin Management Unit. They have scheduled the objections resolution meeting for their e-bike EA on January 31 (via Zoom). Randy plans to participate as lead objector and has asked if a rep from BCHC can also sit in.

Stewards of Sequoia notified Pat Shreffler, a member of BCHC's Kern River Valley Unit, on January 6, 2025, of a motorcycle race being planned for Keyesville and sent a protest letter against the race. He asked if Kern River Valley Unit concurred and supported protesting the race permit. The unit said yes. Then on January 8, BLM denied the permit. So, it is a done deal for now. Pat will be checking to make sure it is not a future issue.

Horse Protection Act - Effective February 1, 2025. What is coming are the revised rules to the Horse Protection Act (HPA), which will be implemented February 1, 2025. The implementation and enforcement of these new rules encompass ALL BREEDS of HORSES, all horse show events from local horse shows, state fairs, and 4H shows to Pony Club, Polo, and Dressage to regional and national association and affiliate horse shows and more. The new rules will also have an impact on ALL HORSE SALES. Please investigate this to see how it may affect your life with horses.

Randy Hackbarth, BCHA National Director, talked to Larry Shuman, BCHA National Director about Whiskeytown, in Lassen National Park, that is in Larry's area, about allowing e-bikes on any trail that allowed bikes. He said most of the trails are already multi-use, they don't see much activity, and that the area is open with passing easy, and long visual to see what is coming. Shasta Trinity Unit will discuss whether they need to become involved. However, Larry mentioned there is a lot of BLM land in the area and BLM classifies e-bikes as motorcycles.

REMEMBER

Send your membership renewals to VP of Membership Chip Herzig. DO NOT SEND THEM TO BCHA. Sending to the wrong place will delay payment and cause your membership to show as expired so you cannot participate in unit events.

MEMBERSHIP



BCHC VP of Membership
Chip Herzig

MEMBERSHIPS AND DIRECTORS

During this time of year, BCHC calculates its membership numbers to figure out how much we owe our parent organization, BCHA, in dues as well as to determine the number of State Directors allocated to each unit.

Membership counts are calculated by adding up all the Family memberships, multiplying by two, then adding the number of Individual memberships to get the total for each unit.

The way the number of Directors is determined, according to BCHC Bylaws, is each 150 members of a unit get one Director. So, membership of 10-150 gets one Director; 151 to 300 members get two Directors and, finally, 301-450 members get three Directors. See below table for Director counts.

Unit	Total of DCTR	# State Directors
Antelope Valley	32	1
Eastern Sierra	53	1
High Country	46	1
High Sierra	92	1
Kern River Valley	28	1
Kern Sierra	57	1
Los Padres	115	1
Manzanita Riders	52	1
Mid Valley	302	3
Mother Lode	217	2
North Bay	60	1
Redshank Riders	69	1
Redwood	138	1
San Joaquin Sierra	110	1
Santa Ana River	65	1
Sequoia	46	1
Shasta Trinity	123	1
Sierra Freepack-ers	43	1
Sutter Buttes	42	1
Top of the State	91	1
Totals	1781	23

1

7

8

1

SAW PROGRAM



BCHC Saw Program Manager
Dan Chartier

BCHC WELCOMES DAN CHARTIER AS SAW PROGRAM MANAGER

Dan Chartier comes from a logging background. He worked in the woods of Humboldt County until the timber industry began shutting down, then went to work for CALFIRE. After 25 years with CALFIRE, Dan retired from his position as a Heavy Fire Equipment Operator.

Dan and his wife of 42 years joined the Shasta Trinity Unit some 12+ years ago. They rode as outriders for a few years and now have five horses and three mules and spend their summers packing, opening trails, and supporting USFS trail crews.

Dan was the Lead Chainsaw Instructor and State Cadre Lead for CALFIRE's Chainsaw Program from 2005 to 2019. He has also been part of BCHC's Saw Program from its start some years back. Dan is a CALFIRE Certifier along with a USFS Chainsaw /Crosscut Evaluator.

Thank you, Dan, for taking on the position of BCHC Saw Program Manager!

DON'T MISS THESE IMPORTANT DEADLINES!

- FEBRUARY 1, 2025 - Individual and Unit Education Award nominations for 2024** due to co-VPs of Education. These awards recognizes both a member and a unit for their efforts in BCHC Education.
- Volunteer Service Hours Report.** Send to Cindy McMurry, 2nd VP (Volunteer Service).
- 2024 Public Lands Awards** (Ann Lange and Ben York Awards) - Send to Troy Patton, VP of Public Lands.
- 2024 Max & Irene Cochran Journalism Award** - Send hard copies of 2024 unit newsletters to Newsletter Editor C.J. Hargreaves.
- Top Hand for 2024** - Send Unit President's choice to BCHC Treasurer Lynn Joiner.
- FEBRUARY 28, 2025 -**
Unit Financial Statement – send to BCHC Treasurer Lynn Joiner.
Unit Report of Activities – send to BCHC Secretary Annette Pounds.

EDUCATION



BCHC Co-VP of Education
Ruthie Heuer



BCHC Co-VP of Education
Denise Robinson

ATTENTION UNITS:

Education is a cornerstone and integral part of this organization's purpose. Have you nominated your Unit for the Education Award? Have you nominated an Individual?

Our recommendation for the awards program is as follows:

- ☐ Nomination Forms will be available at the State Meeting in October of each year.
- ☐ The form is due February 1.
- ☐ The nominations received would be submitted to the Education Steering Committee by February 15.
- ☐ The awards would be presented at the Rendezvous.
- ☐ \$150 would be allocated for the Individual award and \$150 for the Unit award.

The suggested Selection Criteria for the awards is:

Individual Award:

- ☐ Someone who has demonstrated unique, creative, and innovative education programs.

- ☐ Someone who has used different methods or made a variety of presentations.

- ☐ Someone who has reached a variety of age groups.

Unit Award:

- ☐ A unit that promotes education using teamwork.
- ☐ A unit that participates in a variety of events, such as (but not limited to): parades, fairs, pack clinics, special events, etc.
- ☐ A unit that has members who have participated in State BCHC-sponsored programs such as the LNT/Gentle Use Program, the Wilderness Rider Program, the Masters of LNT program, etc.
- ☐ A unit that has members who contribute articles for unit, state and/or the education newsletter

The goal of BCHC over the years is to have at least one Master LNT/ Wilderness Rider in each unit throughout the state. Some units have more but we strongly suggest that each unit consider the importance of this program and encourage a unit member to enroll for this fall.

Please contact co-VP of Education, Denise or Ruthie, if interested.

Rendezvous Classes and Core LNT Classes

The host units for this year's Rendezvous have some excellent classes planned that will cover many topics falling under "Plan Ahead and Prepare." The northern units have been working hard and have excellent seminars and classes for you to enjoy. The venue has beautiful grounds, great camping, hookups, horse facilities, and food. If the class qualifies for pin points, it will be so noted in the Rendezvous program.

The Core Classes that will be offered at Rendezvous 2025 are as follows and are qualified for pin points:

- ☐ Plan Ahead and Prepare
- ☐ Travel and Camp on Durable Surfaces
- ☐ Leave What You Find
- ☐ Respect Wildlife
- ☐ Stock Management

Pin Point System:

Each qualified class is given 10 points. There is a brand-new pin available for those who attend qualified classes. These classes will be noted in your Rendezvous program. Be sure to get the instructor's initials after each class to verify you attended. Pins are available to BCHC members only.

NEW! Green/Boot pin: minimum of 50 points required (5 classes)



Horseshoe pin: minimum of 100 CORE points required (all 10 CORE classes)

Star pin: minimum of 250 points required (must include all 10 Core classes plus 15 additional classes)

TRAILMEISTER COMING TO RENDEZVOUS!



Master Leave No Trace Stock Course and Wilderness Rider Course
This five-day course is planned for the latter part of September or early October of this year. The Center of Excellence will be hosting us in the northern part of the state. We are working with the LNT Center to have qualified instructors and organize our paperwork with them.

RENDEZVOUS 2025

RENDEZVOUS, continued from Page 1

and tips and steps you can take to save your life or another’s life when disaster strikes while riding on backcountry trails. Please consult the Rendezvous registration packet or program for more details regarding the TrailMeister’s free seminars and the paid cinch-making clinic, April 11-12.

It wouldn’t be Rendezvous without the opportunity to compete and show off your skills! On April 11, don’t miss the Dutch Oven Cooking Competition scheduled to start at 1 p.m. near the RV camping area. Also planned are Dutch Oven cooking demonstrations, Saturday, April 12. During the Friday competition, come meet the contestants to observe Dutch Oven cooking in action. You will learn the basics of Dutch Oven cooking, including essential equipment, temperature control, and cleaning/storage of the pots. Plus, you get free samples of the dishes, recipes, temperature control charts and a chance to vote for the best dish! Please see the Rendezvous registration packet and/or program for full rules and information.

On Saturday, April 12, BCHC will host a CSHA-sanctioned Trail Obstacle Course Challenge in one of the indoor arenas. This competition features divisions for adults and youth and will feature up to 16 trail/backcountry themed obstacles. We’ve included a “Pack Animal” division for both adults and youth, so come out and show off your horsemanship skills with your pack animal in tow on our obstacle course! Costs and all details for the competition and stalls are featured in the Rendezvous registration packet and program. If you’ve never seen an obstacle course event, come out and watch the riders and equines show off their skills on obstacles of varying difficulty.

Also on Saturday, April 12, we’ve scheduled our adult, college, and youth packing competitions. These competitions feature classes for individuals as well as teams. Please consult the Rendezvous registration packet for more details and consult the event program for times and locations of the competitions.

Last, but certainly not least, BCHC is hosting the popular Western Art Show competition again this year. This is a great opportunity to show off your artistic talents in divisions such as photography, painting, leatherwork, carving or anything artistic your mind can imagine. This show is open to all ages, so we encourage youth to participate! As always, please consult the Rendezvous registration packet for more details and an entry form.

Have you heard about the Devils Garden Wild Horse Adoption Program, but you want to learn more? Here’s your chance! Backcountry Horsemen of California is partnering with the Modoc National Forest to offer a wild horse satellite adoption event at 2025 Rendezvous. The Modoc National Forest will provide wild horses from Devils Garden and other areas in far northern California. For more information, including requirements to adopt a wild horse, call (530) 233-8738 or visit <https://go.usa.gov/xQ3r3>.

The Rendezvous venue, Rolling Hills Casino, prepares fantastic food so don’t miss the dinner events Friday and Saturday nights. Friday night dinner will feature a raffle with donations that will include unit-specific items and baskets, handmade items donated by unit members, family and friends, and gently used or new equine tack. Donations can include food or alcohol but we cannot accept firearm donations. Collection and delivery of donations should be coordinated by each unit’s leadership to arrive at Rendezvous no later than 1 p.m., Friday, April 11.

For Saturday night’s dinner, there’ll be more raffle items, and, of course, a live auction. We are already getting some great items for the auction and raffle, but we encourage all members to consider donating an item to help with fundraising efforts.

Saturday is also the night where BCHC awards, such as the Anne Lange Award and the Max & Irene Cochran Journalism Award, and Unit Top Hands are announced. This will be a great night to celebrate some amazing volunteerism, BCHC members and their accomplishments.

If you’ve never been to Rendezvous, it is an outstanding opportunity to meet and network with BCHC members and equine/backcountry enthusiasts from all over the West Coast, learn new skills, show off the skills you and your equine already have, and leave inspired to do more great work and enjoy your favorite trails and backcountry locations. We think you’ll be super impressed with the Rolling Hills Casino Equestrian Center and all it has to offer equine enthusiasts.

If you have any questions about the details featured in this article, please don’t hesitate to reach out to one of the following committee chairpersons:

Rendezvous Chairman: Larry Shuman, (530) 526-0590, Ishuman62@gmail.com

Vendor Coordinator: Cindy McMurry, (530) 640-0429, mcmurrycindy@gmail.com

Obstacle Course and TrailMeister info: Michele Machado Woods, (817) 308-0258, meechele418@gmail.com

Additional Important Notes:
FOOD, DRINK, AND ALCOHOL RESTRICTIONS AT EQUESTRIAN CENTER – The Rolling Hills Casino has restrictions on the consumption of outside food, drinks and alcohol at the Equestrian Center. Attendees who are camping at the event may prepare and consume food and alcohol at their RVs and/or tents, but food/beverages cannot be taken into the arenas or other equestrian buildings. Food will be available for purchase during the day at the arenas, and those wishing to buy onsite breakfasts and/or dinners should do so via the Rendezvous Registration

LET'S RENDEZVOUS IN CORNING !

“ODE TO OUR FAVORITE TRAILS”

2025 BCHC Rendezvous

Friday - Sunday

April 11 - 13

THE RENDEZVOUS REGISTRATION PACKET IS NOW AVAILABLE!
GET A COPY FROM YOUR UNIT PRESIDENT OR DIRECTOR
OR PRINT IT FROM THE bchcalifornia.org website, “Rendezvous”
page.

REGISTER SOON!

Can't Miss Education & Contests

It wouldn't be Rendezvous without these popular education opportunities and contests!



Packing Demos and Contests

Whether you're looking for hands-on basic packing education, or advanced mentoring, we have you covered with Packing 101, Advanced Packing Skills, and Packing demonstrations from our U.S. Forest Service partners.

Packing competitions will allow individuals and teams to show off their skills and speed with Box Hitch, Diamond Hitch and Odd Load/Balanced Load divisions.

We'll also have a Youth Packing Competition (ages 12-17) and a College Packing Competition. Both are team events and are free to enter.

Use the Rendezvous Packet to enter any of these competitions. For full competition rules, contact:
George Archer - Shasta-Trinity Unit
530-833-5310 or rafteramorgans@gmail.com



Dutch Oven Cooking Contest

The Dutch Oven competition will be held on Friday, April 11, near the RV camping area. We are also planning Dutch Oven demonstrations on Saturday, April 12. See the schedule for times and locations.

During the Friday competition, come meet the contestants to observe Dutch Oven cooking in action. You will learn about the basics of Dutch Oven cooking, including essential equipment, temperature control, and cleaning/storage of the pots. Plus, you get free samples of the dishes, recipes, temperature control charts and a chance to vote for the best dish!

Please see the Rendezvous Packet for full contest information.

Western Art Show Contest

Do you have a photo, painting, carving or leatherwork you would like to display for judging at Rendezvous? Here's your chance to show off your great work! Entry is \$5 for each item. Artwork may be sold at Rendezvous to interested buyers, or you can donate your item to BCHC to be auctioned off at the Saturday, April 12, dinner. Please see the Rendezvous Packet for full contest information.

Rendezvous Registration Packet:
<https://www.bchcalifornia.org/rendezvous.html>

**BACKCOUNTRY HORSEMEN
OF CALIFORNIA RENDEZVOUS**

**TRAIL OBSTACLE
COURSE CHALLENGE**

SATURDAY, APRIL 12, 2025
ROLLING HILLS CASINO EQUESTRIAN CENTER
CORNING, CA

Enter early!
Entries are
limited!

Prizes to
4th place

**CSHA SANCTIONED EVENT
OPEN TO THE PUBLIC**

Divisions
Mini-Youth* (ages 10 & under)
Youth* (ages 17-11)
Novice
Intermediate
Advanced
Pack Animal (Adult & Youth*)

Pre-Registration Costs
Adult: \$40 per division
Youth: \$25 per division
Stalls: See event packet
Camping: See event packet
Register day of event: Add \$5
CA drug fee: \$14

Schedule
8:30 a.m. - Rider walk through with judges
9:00 a.m. - Start with Adult classes
6:30 p.m. - Awards ceremony at dinner

Pre-Register (event packet)
<https://www.bchcalifornia.org/rendezvous.html>

Questions?
BCHC - Michele Machado Woods, 817-308-0258
CSHA - Vicki Nims, 707-695-4235

*Must wear a helmet and have
adult/parent present

BACKCOUNTRY HORSEMEN OF CALIFORNIA RENDEZVOUS

U.S. FOREST SERVICE
WILD HORSE & BURRO PROGRAM

WILD HORSE SATELLITE ADOPTION EVENT

APRIL 11-13, 2025
ROLLING HILLS CASINO EQUESTRIAN CENTER IN CORNING, CA
FOR MORE INFORMATION CALL 530.233.8738 OR VISIT [HTTPS://GO.USA.GOV/XQ3R3](https://go.usa.gov/XQ3R3)

**MARINE CORPS MOUNTAIN WARFARE
TRAINING CENTER ANIMAL PACKERS**

Marine Corps personnel from the Mountain Warfare Training Center in Bridgeport, CA, are scheduled to do packing demos for adults and children as a part of our Packing Education at 2025 Rendezvous.

The Mountain Warfare Training Center offers an Animal Packers Course that teaches military personnel to load and maintain pack animals for military applications in difficult terrain with mission-essential gear.

RENDEZVOUS 2025 RAFFLE

**CATERED PACK
TRIP FOR 2 PEOPLE
4 DAYS & 3 NIGHTS**

Choice of a Trinity Alps Wilderness
or a South Warner Wilderness
experience.

Everything provided except personal
gear.

Estimated value \$10,000.

2 more people can be added for
\$200/per day, per person.

Drawing to be held April 12 at the
2025 Rendezvous. You do not need
to be present to win.

Trip must be scheduled between
June 1-August 31, 2025.

**\$500 BASS PRO
SHOPS GIFT CARD**

Tickets: \$5 each or 10 for \$45
Drawing to be held April 12 at the
2025 Rendezvous. You do not
need to be present to win.



ONLY \$10

**Pack Trip tickets are
\$10 each or 10 for \$90**

Tickets for both prizes may be
purchased through local BCHC Units,
via the Rendezvous Packet,
or at the BCHC State
booth at Rendezvous

For more information, contact
Larry Shuman
phone: 530-526-0590
email: lshuman62@gmail.com

ROLLING HILLS EQUESTRIAN CENTER
Equestrian Center at Rolling Hills Casino & Resort
Address: 2655 Everett Freeman Way, Corning, CA
96021 (take I-5 to Liberal Ave – Exit 628)
Registration Booth located at RV parking (open 7
a.m. – 5 p.m.)
Rendezvous Hours:
Friday - 1 p.m. to 5 p.m.
Saturday - 9 a.m. to 5 p.m.
Sunday - 9 a.m. to 1 p.m.

(Bring portable camp chairs for seating at education events.)

RENDEZVOUS 2025

RENDEZVOUS, continued from Page 11

Packet available from unit Presidents/Directors and on the bchcalifornia.org website, Rendezvous page. If you win a raffle item that features food or alcohol, it must be taken to your RV or off the equestrian grounds to consume.

VENDORS – Do you or someone you know sell or market an equine, outdoors, recreation or agriculture industry product or service? We'd love to have you as a vendor at 2025 Rendezvous. This is your chance to possibly reach thousands of consumers over three days. Vendor booths are \$150 for a 10'x10' space with an opportunity to advertise in the event program. Larger spaces are available. For more information and/or to ask questions, please contact vendor coordinator Cindy McMurry at (530) 640-0429 or mcmurrycindy@gmail.com or visit the bchcalifornia.org website, Rendezvous page for a vendor form and for more information.

SPONSORSHIPS – Rendezvous sponsors can come from all over the West Coast and we would love to have your help in securing sponsors for 2025. Sponsorship opportunities range from \$5,000, with a huge list of benefits, all the way to \$100. All sponsor levels feature the option of placing an ad in the Rendezvous program and the opportunity to display a banner at Rendezvous. We are also looking for sponsors for the variety of competitions (Packing, Trail Obstacle Course Challenge, Western Art Show and Dutch Oven Cooking). Please contact Larry Shuman at (530) 526-0590 or lshuman62@gmail.com or visit the bchcalifornia.org website, Rendezvous page for a sponsorship form and for more information.

ADVERTISING – Advertisement space from Business Card size to Full Page is available in our Rendezvous Program. Ad rates run from \$35 for business card size to \$250 for full color (three total placements available). Our Rendezvous program will be printed in black and white with color covers (front and back). We do not have the ability to create ads. March 1, 2025, is the final deadline to receive camera-ready ads for the program. Please contact Larry Shuman at (530) 526-0590 or lshuman62@gmail.com or visit the bchcalifornia.org website, Rendezvous page for an advertising form.

WANTED!

**Vendors - 10'x10' booth space for \$150
(larger spaces available)**

Contact Cindy McMurry at (530) 640-0429 or mcmurrycindy@gmail.com

**Sponsors - \$100 to \$5,000 levels for
competitions and/or Rendezvous**

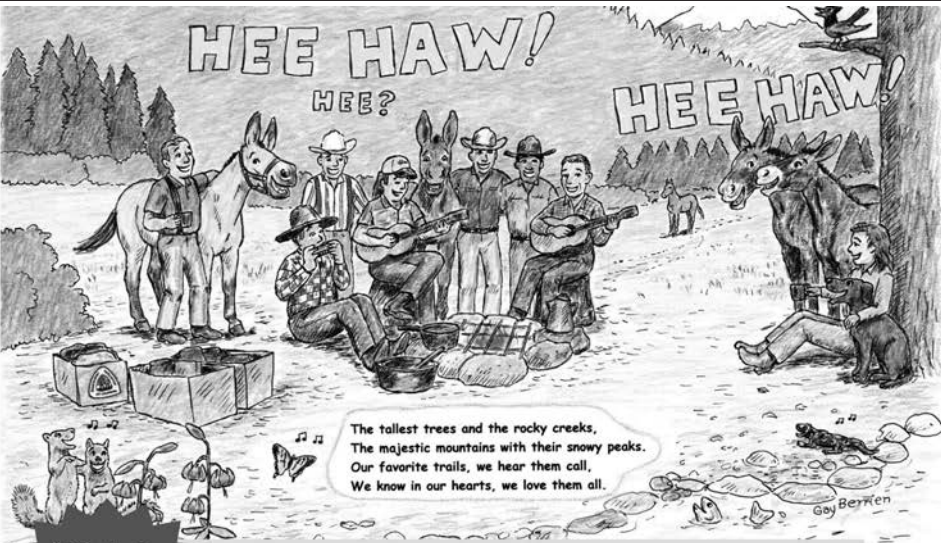
Contact Larry Shuman at (530) 526-0590 or lshuman62@gmail.com

**The Rendezvous Registration Packet is
now available!**

**Get a copy from your unit President or
Director**

**OR print it from the bchcalifornia.org
website, "Rendezvous" page.**

Register soon!



"Ode to Our Favorite Trails"

**BACKCOUNTRY HORSEMEN
OF CALIFORNIA**


Rendezvous 2025

- FREE ADMISSION
- FREE EDUCATION CLINICS
- TRAILMEISTER
- YOUTH ACTIVITIES
- PACKING COMPETITIONS
- MARINE CORPS MOUNTAIN WARFARE MULE PACKER DEMO
- VENDORS

- TRAIL OBSTACLE COURSE CHALLENGE
- DINNER EVENTS WITH RAFFLES & AUCTION
- COWBOY POETRY
- WILD HORSE ADOPTION
- DUTCH OVEN COOKING
- SO MUCH MORE!!

11-13 APRIL 2025 | CORNING, CA
ROLLING HILLS CASINO EQUESTRIAN CENTER

RV spots and horse/mule stalls available at facility
Reach out for more information:
Rendezvous Chairman: Larry Shuman, (530) 526-0590, lshuman62@gmail.com
Vendor Coordinator: Cindy McMurry, (530) 640-0429, mcmurrycindy@gmail.com



“DISRUPTIVE BEHAVIOR?”

When running a meeting, it is likely that you will encounter behaviors that interrupt the flow and get the agenda off track. This useful excerpt from the book, “Robert’s Rules for Dummies” offers tips for quickly getting the meeting under control and running smoothly and efficiently.

This information was provided in handout form to BCHC State Directors and is posted on the BCHC website on the “Documents & Forms” page.

Robert’s Rules for Dummies Dealing with Disruptive Meeting Behavior

General Authority

Generally, the board of directors may deal with disruptive behavior under authority of the governing documents of the association. Many associations are required to conduct meetings according to parliamentary procedures set forth in Roberts Rules of Order or the association’s bylaws and rules. If your association does not have such requirements, it is a good idea to adopt a procedure for conducting meetings in order to cut short obnoxious and disruptive behavior. Some associations use Roberts Rules of Order as a source for maintaining orders; however, even if using Roberts, it is essential that you use such source in conjunction with, and not contrary to, your governing documents and the applicable statutes. If your governing documents do not have provisions against disruptive and harassing behavior, your association should amend its documents to include them. The association should also ensure that its governing documents contain procedures for reprimand, fines, suspension and even expulsion of unruly members during meetings.

Methods for Keeping Things Calm and Orderly

Announce Ground Rules: Prior to starting the meeting, the presiding officer should explain the ground rules for conducting the meeting. The officer should explain the meeting process and state if and when comments will be permitted. Board meetings, with the exception of executive sessions, are open to all members and the Board must allow all to speak. If certain members tend to continuously disrupt or dominate the forum, strict time limits and control techniques, discussed below, should be applied consistently throughout the meeting. Keep in mind, however, that many members are attending a meeting solely for the purpose of providing helpful and constructive suggestions. You should not discourage such contributions or, worse yet, inadvertently create member apathy!

Time Limits for Speaking: More often than not, the Board must prepare itself for a heated, if not downright nasty, debate on a controversial topic. If such a topic is on your agenda, the Board should set limits on speaking time. In addition, rather than calling on raised hands during the meeting, the Board should provide a sign-up sheet

for those who wish to speak. An ideal time limit is three to five minutes. The Board should also set a rule, which should be announced with the other “ground rules” at the beginning of the meeting, that all who wish to speak must have an opportunity to speak once before anyone can speak a second time. While the Board must allow for a reasonable number of people to speak to each side of an issue, this number will vary depending on the number of homeowners who wish to speak. It is reasonable to establish a shorter speaking time limit for those who wish to speak a second time or to rebut a previous comment. Keep in mind that the Board must allow a homeowner to speak before the Board takes formal action on any item under discussion. This opportunity to speak must be allowed in addition to any other speaking opportunities provided by the Board.

Controlling the Meeting: The chairperson of any meeting must embody the following qualities: organization, composure and, above all, the ability to remain calm, yet in charge, of the often frenzied mass of speakers. That familiar scenario in which a controversial topic causes respectful, courteous “friends” to degenerate into disrespectful, profanity-using, and even threatening “strangers” can be avoided. If faced with a particularly hostile or difficult member, the chairperson should first warn such member and call him or her to order. In the case of a particularly egregious breach of order, after numerous warnings the chairperson can direct the secretary to take down the words used by the disorderly member, and should “name” the offender in such minutes (i.e., “Mr. X! The chair has asked you to refrain from offensive language three times, and yet you still refuse to comply.”)

Removing the Member

Removal should be the last resort. If an association cannot conduct business due to serious and/or continued disruption from a member, the Association may consider ordering him or her from the meeting. Such action, however, is not recommended unless absolutely necessary, as the removal of a member could have negative repercussions. A better alternative would be to adjourn the meeting until a later time rather than forcing a member to leave.

Robert’s Rules for Dummies (4th edition) by C. Alan Jennings is available for purchase in paperback, spiral-bound and audio versions on Amazon and from used book sellers for anywhere from about \$4 to \$20. Consider adding it to your personal library.



UNIT NEWS

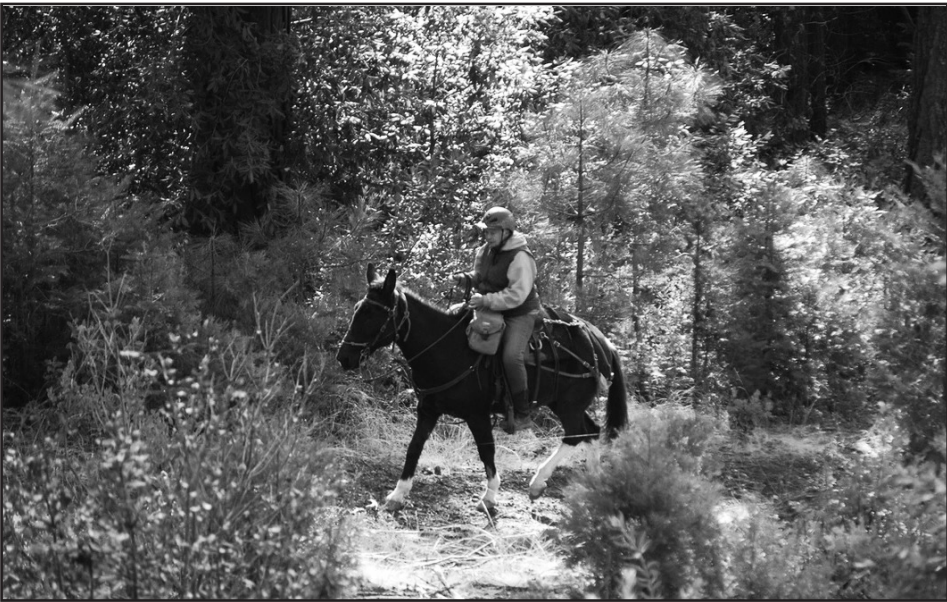
SUTTER BUTTES UNIT: FALL MYSTERY RIDE

Submitted by Jacki Sandquist

Sutter Buttes Unit held a Mystery Ride at Doon Grade Ranch in Magalia, California. Riders joined in mid-November for a pine forest and colorful fall trail ride followed by country chili with cornbread and green salad. The lunch was free and a mystery game was included in the fun.

Thank you to all our amazing supporters for generous prize donations and to Doon Grade Ranch for allowing us to use their beautiful venue. We truly appreciate our dedicated volunteers who brought this event to life. With over 30 riders enjoying the vibrant fall scenery, we had an incredible turnout!

We're excited to announce that our 2025 event schedule will be filled with fundraisers, educational clinics, horse camping, and trail rides, all in support of our unit's mission to enhance the use, care, and development of California's backcountry trails and campsites. Creating a welcoming and inclusive atmosphere for riders to come together and explore the outdoors. No matter your level of expertise, we invite you to join us on our next adventure.



REDWOOD UNIT: REDWOOD UNIT DELIVERS AFTER COWBOY CANNED FOOD CONVOY

Articles by Susan Combes and Kim Chamberlain combined with permission

Mother Nature hinted she might hold off on forecast rain so riders would not have to struggle into foul weather gear for Redwood Unit's 17th annual Cowboy Canned Food Convoy, November 23, 2024. Despite her failure to cooperate, riders in slickers and drover's coats saddled up and rode out to kick off the annual holiday food drive for Humboldt County's Food for People.

Earlier in the month, unit members, led by event organizer Billie Mohr, had placed decorated food collection boxes in shops and stores along Third Street in Eureka's historic Old Town. The community was invited to come watch the horses and riders parade through Old Town Eureka and was encouraged to bring non-perishable food to donate for the drive. As the convoy began, riders with saddle bags already stuffed with food or ponying pack animals with empty panniers, were joined by the foot crews and Kawasaki Mule riders who collected food and scooped up manure. Those on foot emptied collection boxes into panniers as the convoy clopped by. A couple of drivers stopped their cars to hand sacks of food out their windows.

After riding to the Carson Mansion for a group picture, the convoy returned to its respective trailers with 197 pounds of food and \$225 in cash donations.

The crew with horses and mules, either under saddle or sporting packs, and one attention-grabbing miniature horse, were Marlene Nylander with her 12-year-old granddaughter Mara Nylander, Ed Sher, Mary Moore, Lori White, Dennis Halligan, Rochelle Halligan, and Jeff Chase. Cindy Giacomini had the mini in hand.

On foot and helping to transfer collected food to panniers were Billie Mohr, Susan Reid, and Brenda Hoffman. Mule driver David Pritchard with Matt Giacomini on board cleaned up after the convoy.

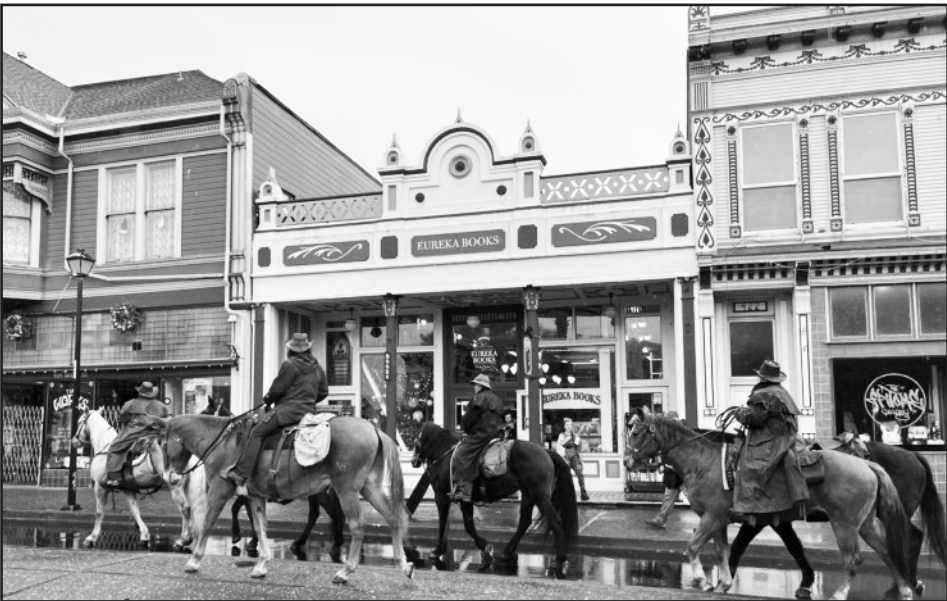
Food for People's Holiday Spirit Food & Fund Drive takes place throughout November and December and is Food for People's largest food and fund drive effort of the year. Rising costs of food and gas combined with the end of pandemic-era assistance programs have caused record numbers of people to utilize the food bank this year and Food for People has seen a 30% increase in people seeking food assistance since this spring.

The event is already on Redwood Unit calendars for 2025, with talk of a new flag or banner from Food for People.



UNIT NEWS

REDWOOD UNIT, continued:



MID VALLEY UNIT: HISTORY PRESENTATIONS AT NEW YEAR'S DAY RIDE

By David Rumsey

Mid Valley Unit could not have asked for a more beautiful day to start off the new year. We had a great turnout at our annual New Year's Day Ride at Red Hills. We had plenty of riders and dutch oven cooks on hand. We ate goat stew with cheesy jalapeno cornbread, Julie Perry's award-winning bread pudding that somehow landed on the serving table with less than it started with. Roy Jones made a great batch of chili, some of which I believe to be chocolate lover's delight, and many, many more great dishes that I can't quite remember.

It was a great day with family and friends. We managed to pick up a couple of new members days prior to the event, which put the unit at 302 members, allowing Mid Valley to maintain its three directors for State Board Meetings.

Michael King was kind enough to share some educational information about the history of Cooper Meadow in the Emigrant Wilderness and its well known cabins. It was very interesting; I never knew much about the history of that area. Doug Dollarhide shared the history of Red Hills, a mountain range in Tuolumne County, California, much of which is managed by BLM. That was every bit as interesting. Way to go on education, guys. Keep up the good work!



Above: The Cooper cabins in Cooper Meadow, Emigrant Wilderness.

Right: Red Hills, location of Mid Valley Unit's New Year's Day Ride.

Both photos from Wikipedia.



UNIT NEWS

REDWOOD, SHASTA TRINITY & TOP OF THE STATE UNITS:

THREE NORCAL UNITS ATTEND 2025 WILDERNESS AND PRIMITIVE TRAILS SUMMIT

By Larry Shuman, Shasta Trinity Unit

North state Backcountry Horsemen of California representatives were invited to a cooperative event, “2025 Wilderness and Primitive Trails Summit,” hosted by the Bigfoot Trail Alliance. The event was held in Eureka and BCHC had representatives there from the Redwood Unit, Top of the State Unit and the Shasta Trinity Unit.

The Bigfoot Trail Alliance is a diverse group dedicated to keeping remote and wilderness trails open to hikers and horsemen. The list of Regional Partners that made presentations were:

- Bigfoot Trail Alliance
- Watershed, Research, and Training Center
- Pacific Crest Trail Association
- Ascend Wilderness Experience
- Del Norte Trails Alliance
- Siskiyou Mountain Club
- California Conservation Corps
- Klamath, Six Rivers, Mendocino, and Shasta-Trinity National Forest
- Backcountry Horsemen of California

One group had to back out so BCHC’s Michele Machado and Larry Shuman were able to provide information at both the morning and afternoon sessions. I was delighted and surprised how much BCHC was respected and applauded for the work members do in cooperation with these partners. Our names came up a lot.

In the morning session we discussed trail issues, resources each can bring to the table, how we can cooperate better and much more.

In the afternoon we discussedED education, and we described BCHC’s 2025 Rendezvous being held in Red Bluff. We invited groups to do presentations at the Rendezvous and Ascend Wilderness Experience agreed to come and help put on some trail classes. Michele Machado will talk to Bigfoot Trail Alliance about also having a presence and putting on classes.

One of the main things taken away from this meeting was we need to increase cooperation and be involved not only in trail work but also in the education of our members and partners. It looks like the Summit will be an annual event and it may be expanded to include education. It is possible that next year we will have a day to meet and discuss issues and then have a day for members to come for educational seminars. Bigfoot Trail Alliance is looking into this suggestion which we, as the

north state BCHC, fully support.

What a great event, so informative. Thank you, Bigfoot Trail Alliance, for heading up this program and bringing us all together!

For more information about this Summit, see: <https://www.bigfoottrail.org/2025/01/2025-wilderness-and-primitive-trails-summit/>



UNIT NEWS

MID VALLEY UNIT:

NO GRINCHES AT COLUMBIA CHRISTMAS PARADE

By Barb Savery with Deb and Scott Lewis, and Steve and Brenda Bauhr

The weather was beautiful and Columbia All Equestrian Christmas Parade entertained hundreds of smiling visitors to Columbia State Park on Sunday, December 8. The parade started right at the stroke of 11 a.m., led by the Tuolumne County Sheriff's Posse, followed by 18 other entries, including the famous Ponte carriage drawn by two matched Percherons. Terri Arington and her neighbor, Kevin Kirschman, did a great job playing Santa and Mrs. Claus and had a terrific time walking around the park afterward, talking to the kids who came to the parade.

The State Park had rearranged parking, requiring that the main lot at the park entrance be reserved for spectators' vehicles. Participant rigs had to park at Columbia Elementary Schools, along Columbia Street and in the smaller parking lot between State and Yankee Hill. The rearrangement created problems because the school's front lot quickly filled up, even though it was technically off limits. Deb and Scott Lewis, Rick and Joan Tilbury, Lloyd Erlandson and Michael King worked hard to keep the parking untangled, but we will make some adjustments next year! The State Park reworked the parking plans because we had such a huge turnout last year, so I guess success breeds problems and we should take this as a backhanded compliment.

Riders and spectators brought a whole SUV load of unwrapped toys for the Amador Tuolumne Community Action Agency Families Program, and it really made me smile – as tired as I was – to see the ATCAA staff loading bag after bag of toys into their huge car. They were ecstatic and couldn't thank Mid Valley enough. I just must mention Brooks Quarter Horses: they don't ride in the parade, but the last two years they have made a special trip to meet me afterward and donate bags and bags of toys for the ATCAA program!

A big thank you to Tracey Peterson and Tom Nakival of Clarke Broadcasting and Jim DeGlopper, Chairman of Friends of Columbia, who did the announcing for the parade, and to Joe Pimentel who lined everyone up and got the parade started right on time. Dave Forrest did a yeoman's job of poop scooping; we couldn't have done the parade without him. Finally, a special heartfelt thanks to Dennis and Jamie Ponte and their drop-dead gorgeous horses for the magic they always bring to this parade.

We will make some adjustments to parking and cleanup next year, especially at the school, but we had a great crew this year, great riders, and a lot of happy people who watched the parade. Merry Christmas, everyone!

What a perfect day for a parade featuring the famous Ponte carriage and Mr. and Mrs. Santa collecting bag after bag of toys for local children!



WELCOME, NEW MEMBERS!

**We look forward
to meeting you!**

**The following 45 new members joined BCHC from
10/16/2024 through 1/14/2025**

High Sierra	Sandy Wall
Kern River Valley	Dustin Clark
	Mack Mackenzie
	Taira & Warren Rankin & Justis Daniels
	Savannah Ruotsala
Kern Sierra	Sylvia Melody Papel
	Shea & Misty Sanders
	Linda Snapp
Los Padres	Patrick Morris
Mid Valley	Craig Baker
	Kaylie Bulah
	Melanie & Josh Canepa
	Leslie Canham
	Kerriann & Jason Carroll
	Holly Fletcher
	Colette, Nicole & Matthew Ghan & Teagan Dodd
	Korri Hembree
	Lynne Higgins
	Matthew Jackson
	Isobel Johnson
	Kevin Kirschman
	Michele & Dan Perreault
	Tessa & Samuel Persson
	Jennifer Rapoza
	Scarlett Taylor
Mother Lode	Candace C. Ward
	Simeon Bellanca
	Efrem Bellanca
	Jim Johnson
	Charlene King
	Anna Plaxco & Paul Dudzik
	Matthew & Alice Schug
North Bay	Loes Vandenbiggelaar & Lina Abu-Samaha
	Gretchen Kenny & Mark Allen
	Michael Wolff
Redwood	Angila Luzzi
Santa Ana River	Tori Beck
	Mark A. & Julia L. Doty
	Pamela Erickson
	Gayle Pena
	Marty Salzbrunn
	Katrina Vanesian, DVM & Bryan Vanesian, OD
Shasta Trinity	Emilee Falkenstein
	Cathy Funke

WHY JOIN BACKCOUNTRY HORSEMEN OF CALIFORNIA?

As a member, you'll:

- Get to participate in state and unit activities
- Learn valuable backcountry skills and outdoor ethics
- Gain new friends from among our wonderful members
- Receive the BCHC newsletter
- Be kept up to date on public lands issues
...and more!

Even if you don't ride or aren't an active member, your dues contribute to our cause! You'll be helping pay for work projects, educational materials, training and insurances. Help support our efforts to keep trails open to stock users on public lands!

TO JOIN OR RENEW BY MAIL

1. Fill out the MEMBERSHIP FORM, make a copy for your records. IMPORTANT: Youth Memberships MUST also print, sign, and mail these forms. Youth memberships will NOT be valid until the forms are received.

2. Mail the completed form(s) and check* to:

Chip Herzig
BCHC Membership
1280 State Rte 208
Yerington, NV 89447

*Please make checks payable to Backcountry Horsemen
of California.

TO JOIN OR RENEW ONLINE

1. Fill out the ONLINE MEMBERSHIP FORM, save it and print a copy for your records.

2. Submit the online form. A copy will be sent to Chip Herzig, VP of Membership. IMPORTANT: Youth Memberships MUST also print, sign, and mail these forms. Youth memberships will NOT be valid until the forms are received.

3. Pay with your Paypal

Recognition of Special Individuals

Benefactor funds are used in a variety of ways to support BCHC’s Public Lands activities. Uses of Benefactor funds may include but are not limited to hiring consultants to perform in-depth reviews, financing special studies and reports, and reducing out-of-pocket travel expenses for those who testify at state and federal hearings.

SPECIAL MEMBERSHIPS

10/16/2024 through 1/13/2025

BENEFACTOR (\$100)

Antelope Valley Eastern Sierra	Marge Biehl Greg Allen Bill Carter Craig London Troy Patton
High Country High Sierra	Lorene Guffey Ruth Gerson Nancy Hamill
Kern Sierra	Mylon Filkins, DVM Craig Gunderson Lynn Joiner Larry Mumford Roger Whitaker
Los Padres	Kaye Bruns Robin Cederlof William Chaides Eve Devine Laurie Henry
Manzanita Riders Mid Valley	Patricia Achilly Tony Alamo Jay Barnes Gary A. Cain Carol Jo Hargreaves Rian Hudson Debra Lewis Jennifer Marshall John V. Marshall MID VALLEY UNIT Randy Powell John Schaapman Valerie Sterling
Mother Lode	Tom Cooper Hetty Dutra Donna Jones Furlow Annabelle Toothaker Stephanie Williams
North Bay Redshank Riders Redwood	Lynn Cominsky Kathy A. Burleson James Biteman Carole & Darrel Polasek Erin Zulliger

BENEFACTOR (\$100)

San Joaquin Sierra	John Cunningham Larry Nishma, Knapp-Yosemite Trls Pk Sta James Laber Stephen Naylon Cathie Walker
Santa Ana River	Doris Bartholomew Pat Wolff
Sequoia Shasta Trinity Sierra Freepackers Sutter Buttes	Jamie Wilson, DVM Lori Henderson Ann Bates Tim Holliday

PATRON (\$250)

High Country High Sierra	Lynn Saunders Richard Cochran Jacob Hamstra Trish Pendegraft Karl Pendegraft Sonia Shepard McLellan Willi Coeler
Kern Sierra Manzanita Riders Mid Valley	Lynda & Michael Sterns Karen Barindelli Lloyd Erlandson Dennis M. Serpa Kathryn C. Bennett Jan Walker
Sequoia	Bruce McGowan Kay Walters

MT. WHITNEY (\$500)

Eastern Sierra	Pamela Bartley Sarah C. Sheehan
Los Padres Mid Valley	Otis Calef Terri Arington John Young
Mother Lode Redshank Riders Santa Ana River Shasta Trinity	Catherine McArthur Allison Renck Craig Bugajski Dean Angelides

REMINDER:

If you are using PayPal to pay for a membership that is not your own, notify the VP of Membership at time of payment. (PayPal does not have an option to attach a message when units or individuals pay for someone else’s membership.)

BCHC Units Around the State

ANTELOPE VALLEY

PO Box 84
Valyermo, CA 93563
www.bchc-avunit.org
Marcy Watton
(661) 878-1791
Mwatton@att.net

EASTERN SIERRA

17 Unit B Sunny Slope Rd
Crawley Lake, CA 93546
Anna Baglione
(209) 918-1210
easternsierrabch@gmail.com

HIGH COUNTRY

PO Box 161
Milford, CA 96104
<https://www.facebook.com/groups/170146466736818>
Cindy McMurry
(530) 640-0429
mcmurrywccindy@gmail.com

HIGH SIERRA

PO Box 6632
Visalia, CA 93290
www.highsierraunit.org
Dan Baumgardner
(559) 334-7731
danbdrafthorse@yahoo.com

KERN RIVER VALLEY

PO Box 9507
Lake Isabella, CA 93240
Steve Horst
(661) 867-2777
horststephenc@yahoo.com

KERN SIERRA

16347 Stephenie Rd
Bakersfield, CA 93314-9669
Curtis Harms
(661) 817-5452
mulerider2020@icloud.com

LOS PADRES

PO Box 472
Atascadero, CA 93422
www.bchc-lpunit.org
Greg Feinberg
(805) 458-2879
Feinberg.greg@gmail.com

MANZANITA RIDERS

PO Box 3130
Ramona, CA 92065-0954
Terry Jorgensen
(760) 789-5185
tlh9749@yahoo.com

MID VALLEY

PO Box 1709
Modesto, CA 95353
www.bchcmidvalley.org
Barbara Baglione-Riner
(209) 402-4473
bbaglione@gmail.com

MOTHER LODGE

PO Box 702
North Highlands, CA 95660
www.bchcmdu.org
Randy Hackbarth
(530) 626-0571
trlyrder@pacbell.net

NORTH BAY

PO Box 9435
Santa Rosa, CA 95405
www.northbayunit.com
Dan Horn
(707) 953-4903
bearstrap@msn.com

REDSHANK RIDERS

PO Box 383
Aguanga, CA 92536-0383
www.redshankriders.com
Tabatha Nuner
(760) 315-6931
president@redshankriders.com
norwesgirl@gmail.com

REDWOOD

PO Box 6023
Eureka, CA 95502-6023
www.redwoodunit.com
David Pritchard
(760) 791-2016
dfredpl969@yahoo.com

SAN JOAQUIN SIERRA

PO Box 25693
Fresno, CA 93729-5693
www.bchcsjsu.org
Jim Laber
(559) 250-7906
jim@visaliaidea.com

SANTA ANA RIVER

PO Box 306
Norco, CA 92860
www.sarubchc.org
Carol Kelly
(951) 288-0394
theckcorral@gmail.com

SEQUOIA

PO Box 1298
Lindsay CA 93247.
Jamie Wilson, DVM
(559) 202-7216
drjamie91@gmail.com

SHASTA TRINITY

18870 Oakwood Heights Dr
Cottonwood, CA 96022
www.bchcshastatrinity.org
Mike LaRue
(530) 227-4940
rudebear64@gmail.com

SIERRA FREEPACKERS

PO Box 64
Oakhurst, CA 93644-0064
www.sierrafreepackers.com
Denise Robinson
(559) 877-3532
robnden@netptc.net

SUTTER BUTTES

2568 Lake Hills Dr
Butte Valley, CA 95965
Facebook.com/people/Backcountry-Horsemen-of-California-Sutter-Buttes-Unit/61567898064171/
Gary Paul (Acting Pres.)
(530) 693-0420
muleguy54@gmail.com

TOP OF THE STATE

PO Box 461
Etna, CA 96027-0461
www.bchc-tos.com
Facebook.com/
2273753019542490/posts/
d41d8cd9/2686922421558879/
Michele Machado Woods
(817) 308-0258
meechele418@gmail.com

IMPORTANT NOTE:

The unit names and addresses listed here are taken directly from the 2025 Directory of State and Unit Officers. If your unit's information is incorrect, please contact this Newsletter Editor as soon as possible to report changes.

REMEMBER!

The BCHC Executive Committee no longer sends out membership renewal verification "green slips" via regular mail. Each unit president and membership chair will get their unit's data AND it will be put on the BCHC web page in the password protected section.

Questions? Membership Matters

BCHC VP of Membership is

Chip Herzig.

He will be happy to address your questions or concerns. Chip may be reached Monday through Friday.

By mail: BCHC Membership

1280 State Rt 208

Yerington, NV 89447

Email: BCHC_Membership@

bchcalifornia.org

Phone: (775)463-3634

Membership

(Revised 12/12/2024; released 1/2025)

Backcountry Horsemen
of California



MAIL TO: BCHC
MEMBERSHIP
1280 State Rt. 208
Yerington, NV 89447

MEMBERSHIP
APPLICATION

A Family & Youth
Oriented Organization
Release 1 2025 (12 Dec 24)

☐ New ☐ Change

☐ Renewal

PARENT UNIT AFFILIATION: (Select and CHECK a Unit as your Affiliation)

- ☐ Antelope Valley
☐ Eastern Sierra
☐ High Country
☐ High Sierra
☐ Kern River Valley
☐ Kern Sierra
- ☐ Los Padres
☐ Manzanita Riders
☐ Mid Valley
☐ Mother Lode
☐ North Bay
- ☐ Redshank Riders
☐ Redwood
☐ San Joaquín Sierra
☐ Santa Ana River
☐ Sequoia
☐ Shasta Trinity
- ☐ Sierra Freepackers
☐ Sutter Buttes
☐ Top of the State

DCTR (Your Membership Number): _____

MEMBER’S NAME - No Business Names, Print Clearly SPOUSE/CO-MEMBER’S NAME - MUST SHARE SAME ADDRESS

Street Address/PO Box

City State Zip Code (full 9 digits if known) Area Code Phone Number

Email Address: _____

Email Address: _____

Donation to BCHC Education Fund (Tax deductible) \$ _____ Enclosed: Check No.

Parent Unit Membership Types (Check One)

☐ 1 Year Individual \$60
☐ 2 Year Individual \$110
☐ 3 Year Individual \$160

☐ 1 Year Family \$75
☐ 2 Year Family \$140
☐ 3 Year Family \$205

☐ Young Adult (18-25 years old) \$15
☐ Youth (12-17 years old) \$15*
*Youth members MUST fill out BOTH Youth Membership forms (available online)

☐ Benefactor \$100
☐ Patron \$250
☐ Mt. Whitney \$500

Associate Membership: An Additional \$15 PER UNIT is added to your Parent Unit Dues

Associate Membership Unit Affiliations MAY NOT BE FOR THE SAME UNIT AS YOUR PARENT UNIT

Associate Membership for: _____ \$15/Unit
Unit Name (from above list)

Associate Membership for: _____ \$15/Unit
Unit Name (from above list)

Please clip form along dashed line and keep the below portion for your records.

Parent BCHC Membership Types
Individual, Family, (Shared**), Benefactor, Patron, and Mt. Whitney
A Parent Membership is with a single Local Unit.

****A SHARED** Membership is for two adults with differing last names who share a common address.

Associate Memberships
These special Memberships are only available to persons already holding Parent BCHC Membership. No one may sign up for an Associate Membership without 1) having registered one of the Parent Membership types, and 2) having selected Parent Unit affiliation.

Youth Memberships
Youth Memberships MUST be accompanied by a signed Youth Membership Permission Release and Youth Parent Permission Form. A Youth Membership is NOT valid until BCHC or the Parent Unit has received signed copies of these forms.

Complete information regarding BCHC Membership is available on the MEMBERSHIP TAB at bchcalifornia.org or call (775) 463-3634

KEEP FOR YOUR RECORDS

I submitted an Application Form for a -

☐ 1 Year Individual \$60
☐ 2 Year Individual \$110
☐ 3 Year Individual \$160
☐ 1 Year Family \$75
☐ 2 Year Family \$140
☐ 3 Year Family \$205
☐ Young Adult (18-25 years old) \$15
☐ Youth (12-17 years old) \$15*
☐ Benefactor \$100
☐ Patron \$250
☐ Mt. Whitney \$500

On that form, I also requested:
_____ Associate Memberships

My Total Remittance:-----
My Check Number: _____
Date Mailed: _____

Verifying BCHC Membership by

1) BCHC Unit President’s reports
2) BCHC Membership VP reports
3) a self-addressed stamped envelope submitted with this form
4) a valid email address

LET'S RENDEZVOUS IN CORNING !

2025 Rendezvous FYI



Dinner Raffle and Auction Items: The Rendezvous committee is actively seeking items for the dinner raffles and Saturday dinner auction. Each Unit is requested to donate one large auction item equal to your membership total X \$2. Raffle items for Friday's dinner can be homemade/handmade items, crafts, artwork, Unit specific baskets or new/lightly-used equine tack. Donations can include food and alcohol. We cannot accept firearm donations. Collection and delivery of donations should be coordinated by each Unit's leadership to arrive at Rendezvous no later than Friday, April 11, at 1 p.m.



Leave No Trace Education: Since 2011, Backcountry Horsemen of California has partnered with the Leave No Trace Center for Outdoor Ethics to educate members and the public on the seven principles of gentle use of backcountry resources. Please consult the Rendezvous program for a list of LNT education being offered this year.



Trail Work Classes: Northern California features several very active trail work non-profits and our BCHC Units have forged some valuable partnerships with these organizations to get some great work done on our area trails. We're inviting the Bigfoot Trail Alliance, Ascend Wilderness Experience, the Sierra Buttes Trail Stewardship, and other area trail work non-profits to 2025 Rendezvous to help lead our trail work education classes and "network" with BCHC members to get more great work done in 2025 and years to come.



Equine Health Education : We have at least three North State veterinarians scheduled to teach seminars on topics such as backcountry emergency first aid, leg issues, and equine dentals. We'll also have opportunities to learn about farrier work, hoof care, equine chiropractic, Masterson Method, wildfire and natural disaster rescue preparedness and saddle fitting.

Continued on next page

Rendezvous Registration Packet:
<https://www.bchcalifornia.org/rendezvous.html>

Questions:

Please contact
Larry Shuman at
530-526-0590 or
lshuman62@gmail.com

2025 Rendezvous FYI



Horse and Mule Trainers: Have questions about horsemanship, or need tips on improving your relationship with your mules and horses? Don't miss seminars and educational opportunities with our scheduled trainers, Bryan Neubert and Jeff Gleason.



Saw Demonstrations: BCHC Sawyer Instructors, Dan Chartier and Dave Moser, will be leading demonstrations for both chainsaw and crosscut saws for adults and youth. Dan and Dave can answer any of your questions on sawyer certification and saw safety.



Sponsorships: Rendezvous sponsors can come from all over the West Coast and we would love to have your help in securing sponsors for 2025. Sponsorship opportunities range from \$5,000, with a huge list of benefits, all the way to \$100. All sponsor levels feature the option of placing an ad in our Rendezvous program and the opportunity to display a banner at Rendezvous. We are also looking for sponsors for our competitions (Packing, Trail Obstacle Course Challenge, Western Art Show and Dutch Oven Cooking).

Sponsorship forms, Advertising forms, Questions:

Please contact
Larry Shuman at
530-526-0590 or
lshuman62@gmail.com



Advertising: Advertisement space from Business Card size to Full Page is available in our Rendezvous program. Ad rates run from \$35 for business card size to \$250 for full color (three total placements available). March 1, 2025, is the deadline to receive ads for the program.



Food, drink and alcohol restrictions at Equestrian Center: The Rolling Hills Casino has restrictions on the consumption of outside food, drinks and alcohol at the Equestrian Center. Attendees who are camping at the event may prepare and consume food and alcohol at their RVs and/or tents, but food/beverages cannot be taken into the arenas or other equestrian buildings. Food will be available for purchase during the day at the arenas, and those wishing to buy onsite breakfasts

and/or dinners should do so via the Rendezvous registration packet. If you win a raffle item that features food or alcohol, it must be taken to your RV or off the equestrian grounds to consume.

Rendezvous Registration Packet:
<https://www.bchcalifornia.org/rendezvous.html>

BCHC 2025 Rendezvous

TRAILMEISTER CLINICS

Backcountry Horsemen of California is thrilled to welcome TrailMeister, Robert Eversole, as a featured clinician at our 2025 Rendezvous!

PAID CLINIC

Cinch making

- April 11 and April 12 (two-day clinic, 4 to 4.5 hours each day)
- \$350 per participant (\$100 deposit required to book your spot)
- Participants leave class with a functional mohair cinch and all of the tools and knowledge to build more
- Clinic limited to 16 participants
- Pre-registration is required:
<https://www.trailmeister.com/shop/>

FREE SEMINARS

Educational sessions

- Horse Camping 101
- Lightweight Horse Camping
- When the Shet Hits the Fan
- Steps That Can Save Your Life if the Worst Happens During a Ride

MORE INFO

<https://www.trailmeister.com>

<https://www.bchcalifornia.org>

